

AED CABINET with strobe

In critical moments, quick access to life-saving equipment makes all the difference. This AED cabinet safeguard your Automated External Defibrillator (AED) and ensure it is always ready for action. With a thoughtful interior, it fits ALL types of AEDs. Engineered for indoor and outdoor environments, its robust construction ensures reliable protection and easy access in any environment, perfect for schools, workplaces, public spaces and more.

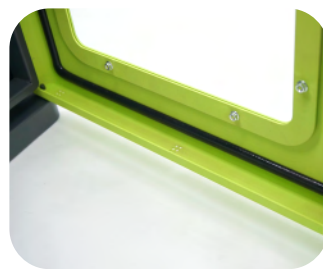


Key Features



Audible and Visual Alarm System

An alarm sounds when the door is opened, providing an alert.



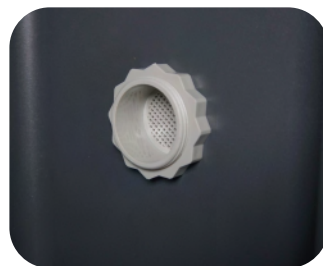
Weather-Resistant Material and Design

Constructed with aluminium for protection against harsh weather conditions.



Transparent PC Window

Allows clear visibility of the AED presence and its status.

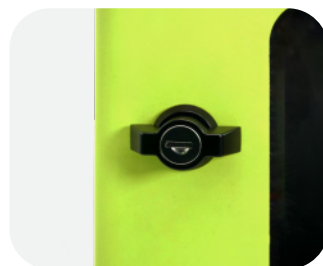


Ventilation

Ventilation holes dissipate heat, keep the AED safe from high temperatures.

Specifications

| | |
|------------------|-------------------------|
| Dimensions | 380H x 350W x 185D mm |
| Material | Aluminium + anti UV PC |
| Colour | Dark grey + light green |
| Weight | 3kg |
| Finishing | Outdoor powder coating |
| Waterproof Level | IP55 |



Knob with Key

Provide an extra level of security and protection.

www.wellkaire.com

+6012-9639132

k1_wellness@k-one.com

K-One
innovate